



WE UNITE

307 993
STUDENTS

61 714
STAFF

115
FACULTIES

OUR VISION FOR THE FUTURE

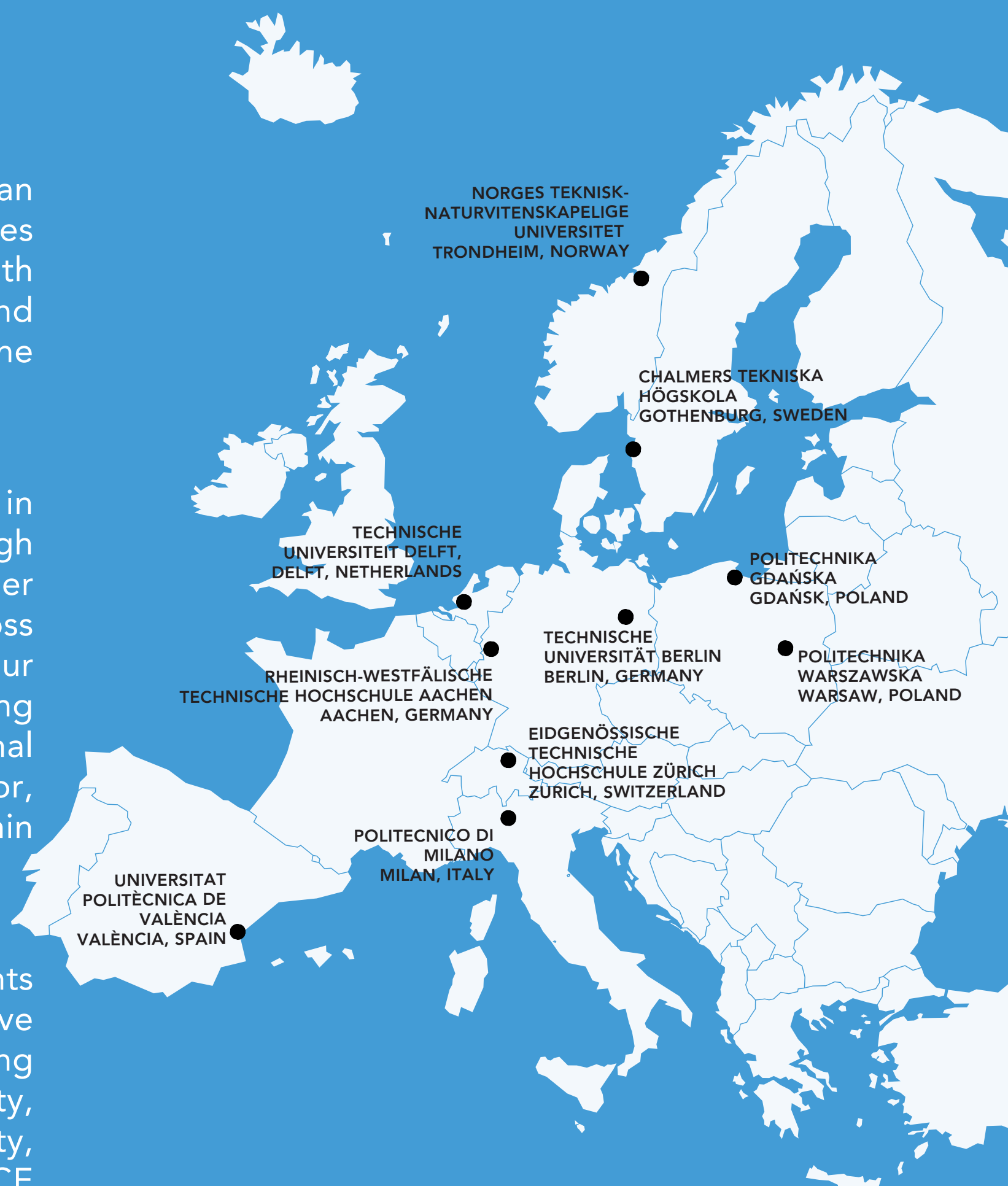
ENHANCE, the European Universities of Technology Alliance, brings together ten leading European research-intensive universities with a focus on science and technology.

At the heart of ENHANCE lies our mission:

Rooted in European values, our Alliance of European Universities of Technology will turn global challenges into opportunities by empowering people with knowledge and competencies in science and technology, to drive responsible transformation for the benefit of society.

We pursue our mission through joint actions in education, research, and administration, and through deepened cooperation amongst our ten member universities and our associated partner network across Europe. Coming from our strengths in research, our mission promotes innovative and sustainable learning and strives for continuous cutting-edge organisational change. In this dynamic development, innovations for, with and within society have a core position within ENHANCE.

We envision a world where scientists and students work closely with society to develop constructive solutions that tackle our world's most pressing challenges. To achieve our vision, we enable mobility, exchange, and drive innovation, inclusion, equality, digitalisation, creativity, and responsibility. ENHANCE is working towards a flourishing and values-based ecosystem for high-quality higher education in Europe, with an international appeal for students, staff, and lifelong learners.



4

NON-PROFIT
ORGANISATIONS

4

BUSINESSES

4

CITY
MUNICIPALITIES

4

HIGHER EDUCATION
INSTITUTIONS

16 ASSOCIATED PARTNERS



ETH zürich



TU Delft



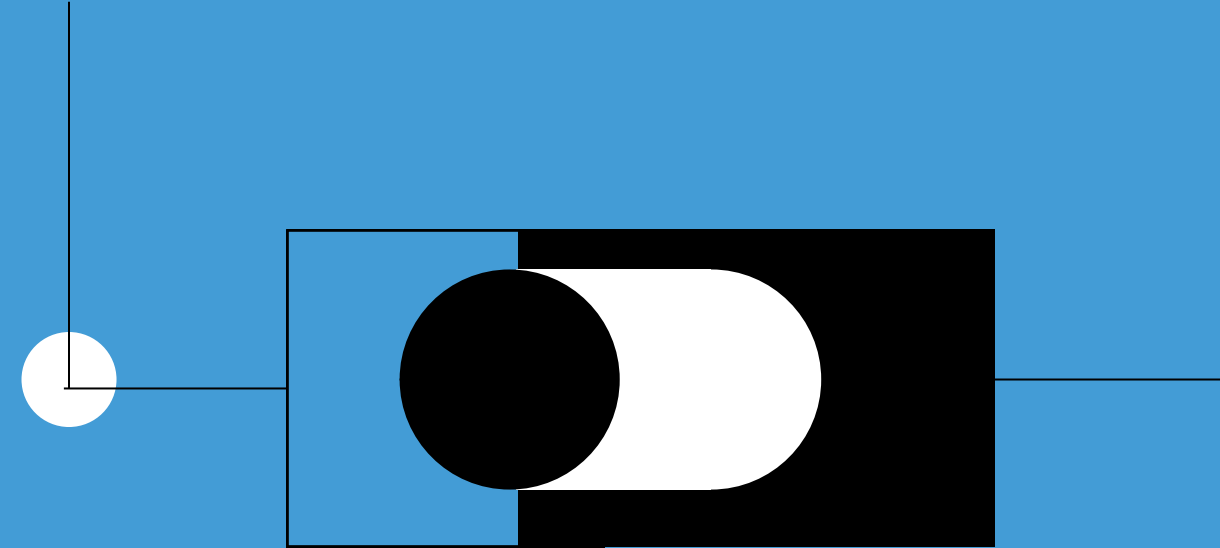
RWTH AACHEN
UNIVERSITY

TECHNISCHE
UNIVERSITÄT
BERLIN

UNIVERSITAT
POLITÉCNICA
DE VALÈNCIA

Warsaw University
of Technology

Co-funded by
the European Union



Putting Our Vision Into Practice

KEY DRIVERS

European Education Without Barriers

We are working towards making transnational education a reality to enable students to become fully immersed in a European education experience. The European Education Pathways are our flagship offer for students where they will benefit from an extensive range of pre-approved and recognised courses provided by our network. Beyond our EEPs, we offer short-term, blended, and virtual learning offers to provide a global perspective for students and lifelong learners. Together with a connected and cutting-edge digital infrastructure our learners will benefit from the ENHANCE One Campus.

The European University for the Future of Europe

We produce the knowledge and talent for Europe to remain an innovation leader. ENHANCE brings education, research, and knowledge transfer together with proactive skills foresight, transdisciplinary living labs, and research in future education as well as challenge-based engagement with society and industry.

The European University for a Resilient Society

As a learning alliance, ENHANCE fosters bottom-up innovation in modern university administration. Inclusion, diversity, and equity are core drivers of our institutional change management, and the wellbeing of staff is at the heart of our effort to improve working conditions and to make our universities attractive and future-proof.

HOW OUR ALLIANCE WILL DRIVE TRANSFORMATION

ENHANCE is an innovative ecosystem for teaching and research in higher education, which will improve our universities' ability to empower people to turn the challenges faced in society today into opportunities, driving significant change at three levels:

ENHANCE Culture

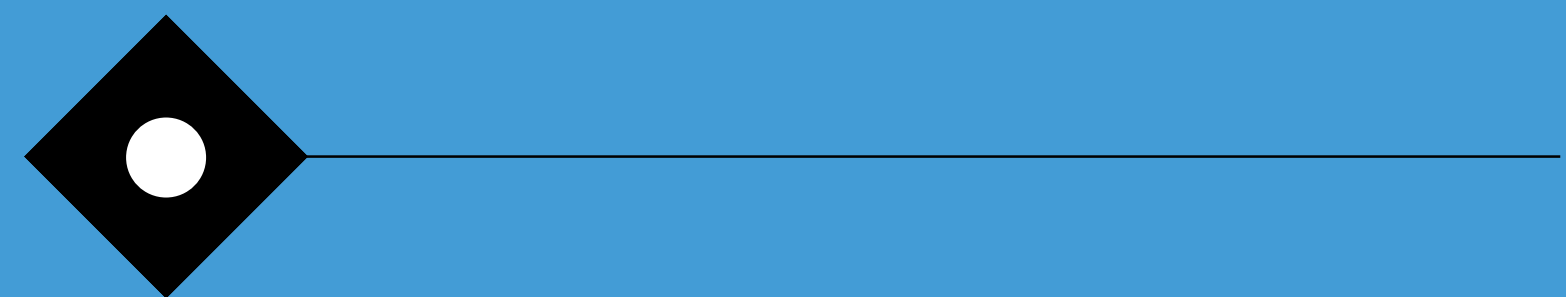
Developing a joint identity based on our shared values and training, creating role models, and establishing processes to enable new formats, enhancing our society-centred approach in research and learning experiences with a focus on sustainability.

ENHANCE Policies

Promoting necessary change in national regulations and at industry level by developing solutions jointly with national stakeholders, other national and European higher education bodies and highlighting the benefits of a joint European Education Area.

ENHANCE Structures

Supporting bottom-up innovation in administration, research, and teaching, driving change in internal structures and procedures through inter-university agreements and long-term alignment of our institutional strategies, i.e., a joint learning strategy, connecting our student administration systems, achieving seamless mobility and automatic recognition through refined internal procedures.



LET'S CONNECT!



 enhanceuniversity.eu



Co-funded by
the European Union

#SHAPINGEUROPE