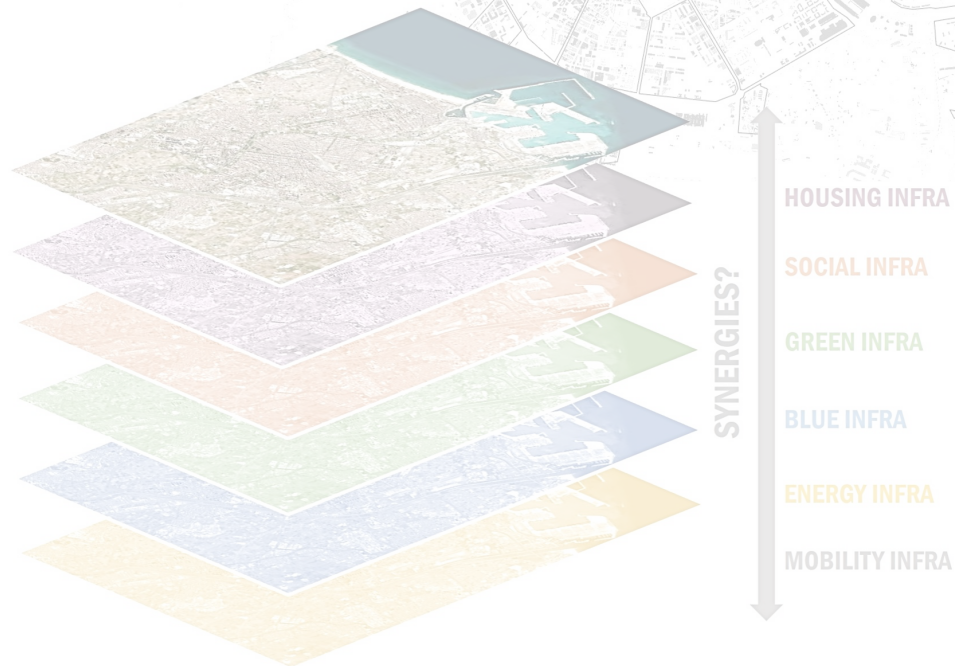


VLC SYNERGIC URBAN INFRA STRUCTURES



TOOLBOX

HOUSING INFRASTRUCTURE

Technical University of Berlin

PROFESSOR/TUTOR:
CHRISTOPH WESSLING
ALENA COHRS

HANNAH BERNER
LEA FAST
DILARA UCAR
CHRISTOPH HOPPENSTEDT
OLESIA SAKHAREVA
LIVA ROZE

1 PROCESS

**ANALYSIS OF
4 SUB-AREAS**

**DEFINITION OF
KEY PROBLEMS**

**DEFINITION OF
PRINCIPLES**

**DEFINITION OF
TOOLS**

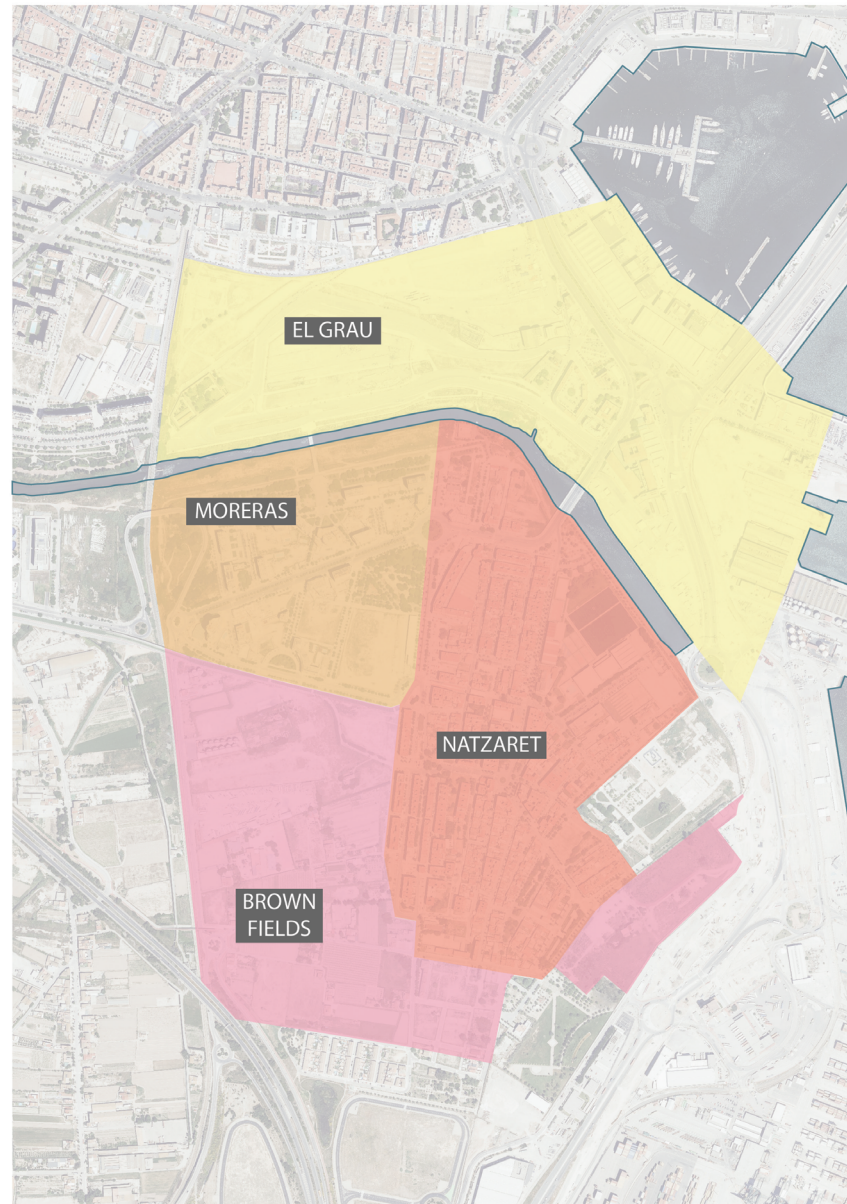
**ANALYSIS OF
SYNERGIES**

***gentrification**
***tourism**
***old buildings**
***lack of (social) housing**
***physical and social segregation**
***lack of services**
***lack of public spaces**
***vacancies**
***physical segregation of the sea**
***unemployment**

***new types of housing**
***connections through housing**
***protection of existing housing structures**
***physical connections**
***social and public housing**
***enhance participatory processes**
***vacant spaces**
***activate public spaces and public live**

***cooperative housing**
***flexible floor plans, shared apartments, apartment swaps**
***new financing models: rent price as a percentage of income/ micro-loans**
*** Policies for a neighbourhood of people with different income, nationalities, age**

2 ANALYSIS OF 4 SUB-AREAS



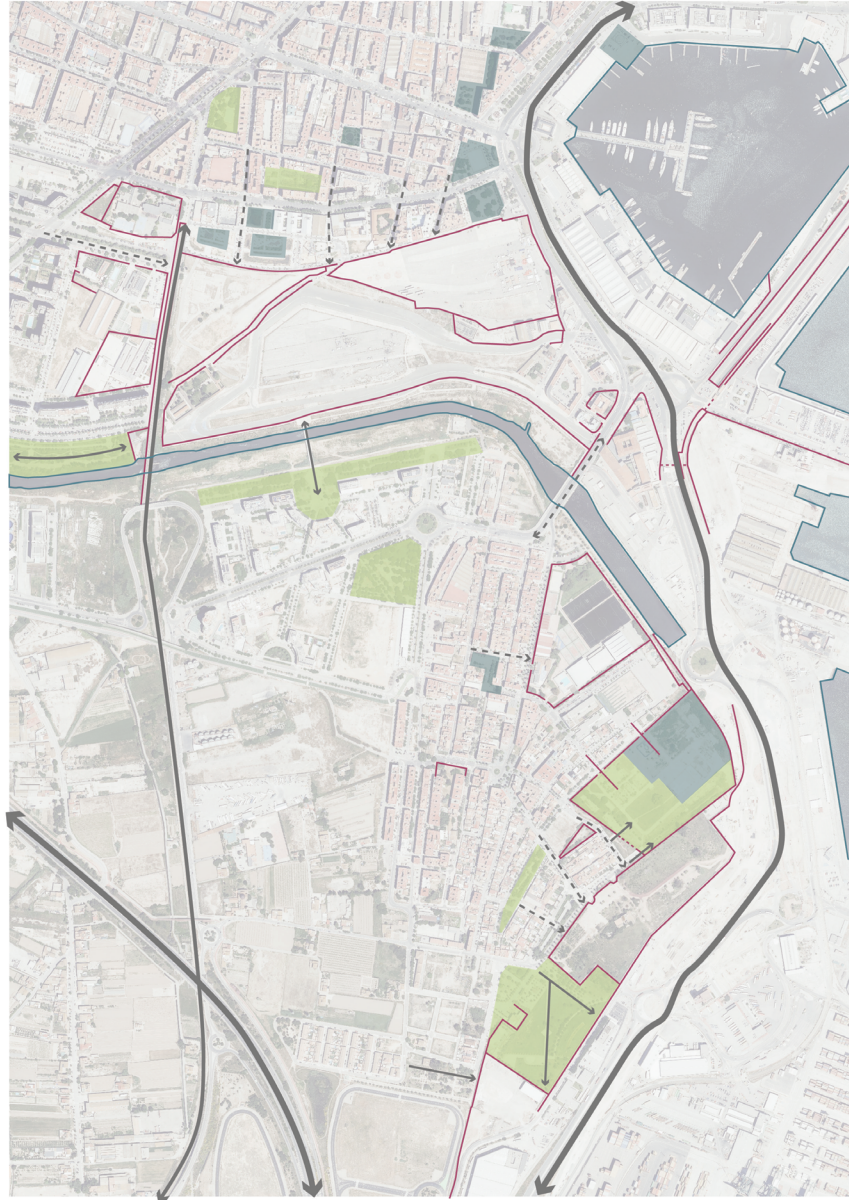
21 ANALYSIS OF 4 SUB-AREAS



PUBLIC SPACES/
GREEN AREAS

22

BORDERS AND CONNECTIONS



23 HOUSING TYPOLOGIES- NATZARET

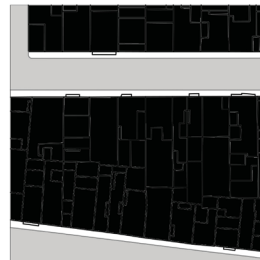
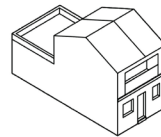


Single-family houses without properties

1-3 Storeys

Mostly built between 1900 - 1952

Very high consumption / sqm

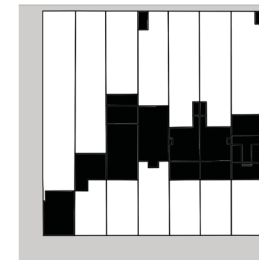
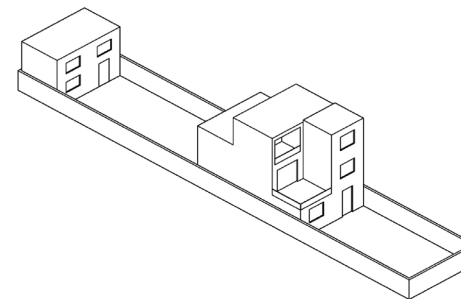


Single-family houses with properties

1-3 Storeys

Mostly built after 1996

Average consumption / sqm



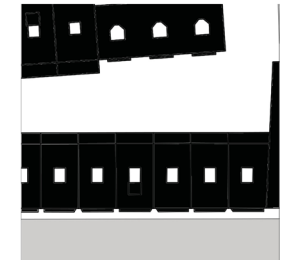
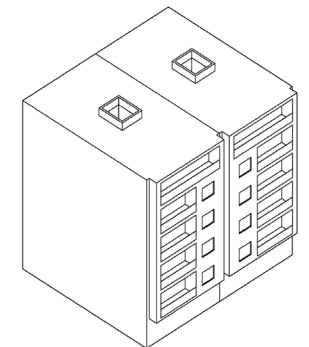
Multi-family complex

4-6 Storeys

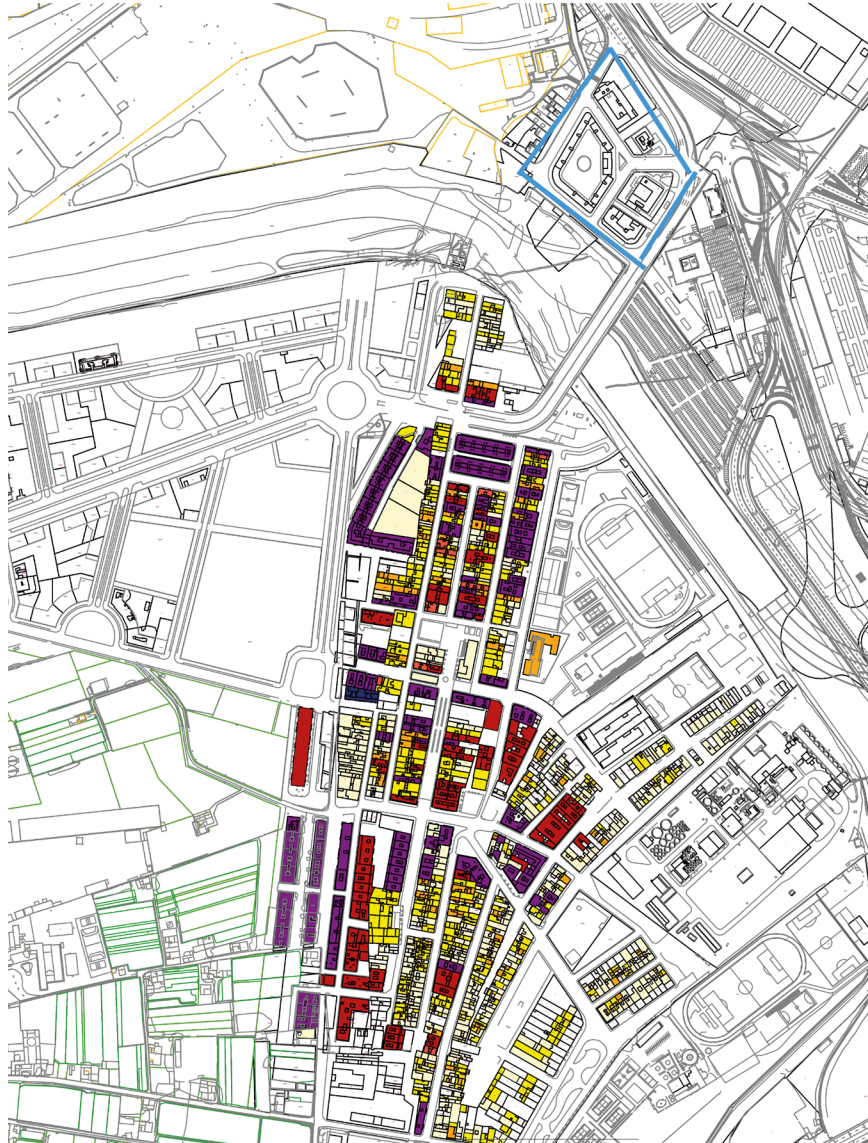
Built after 1963

Low consumption / sqm

Free position on the plot or defining the frontage



2.4 HOUSING TYPOLOGIES- EL GRAU



Administrative buildings

3-5 Storeys

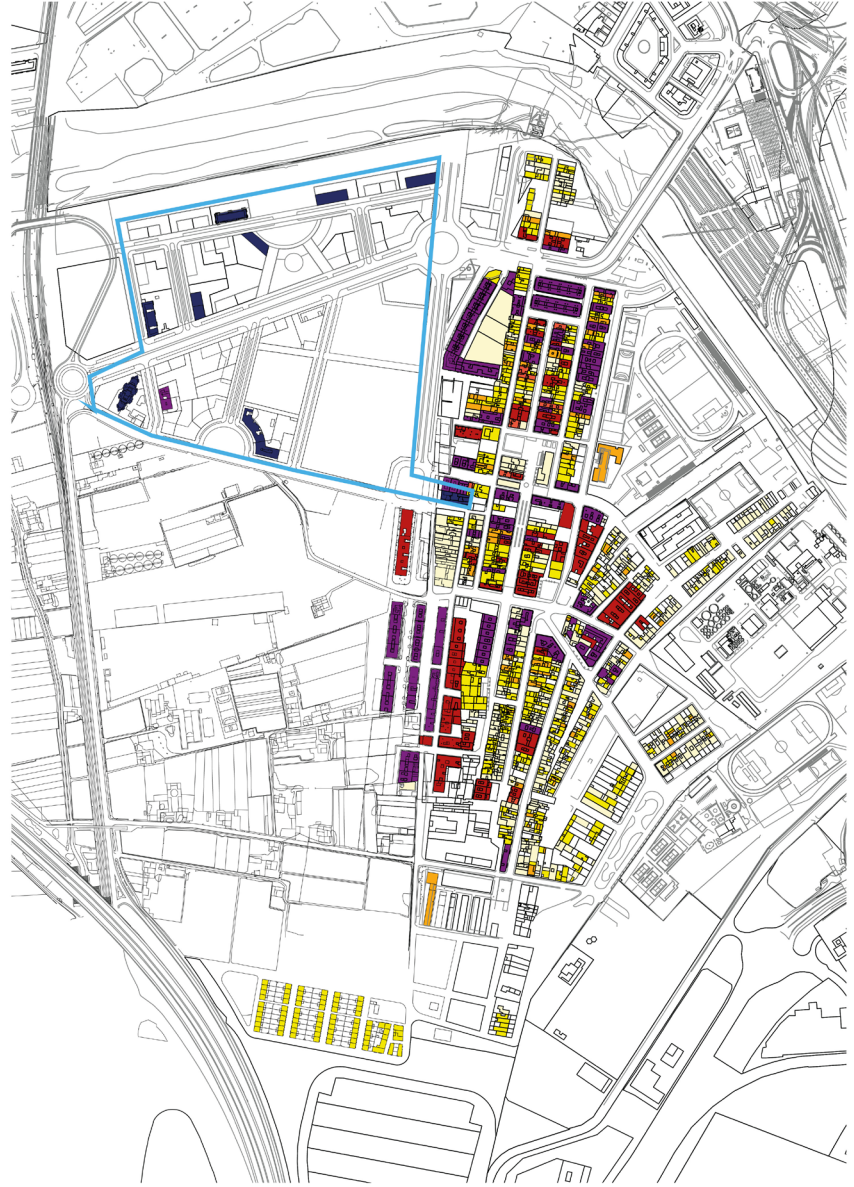
Built between 1900 - 1960

Very high consumption / sqm



2.5

HOUSING TYPOLOGIES- MORERAS



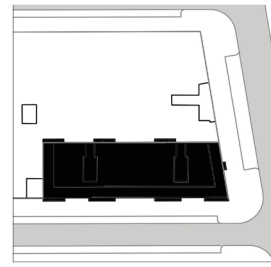
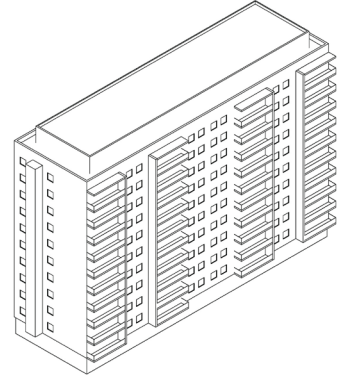
Multi-family complex

7-22 Storeys

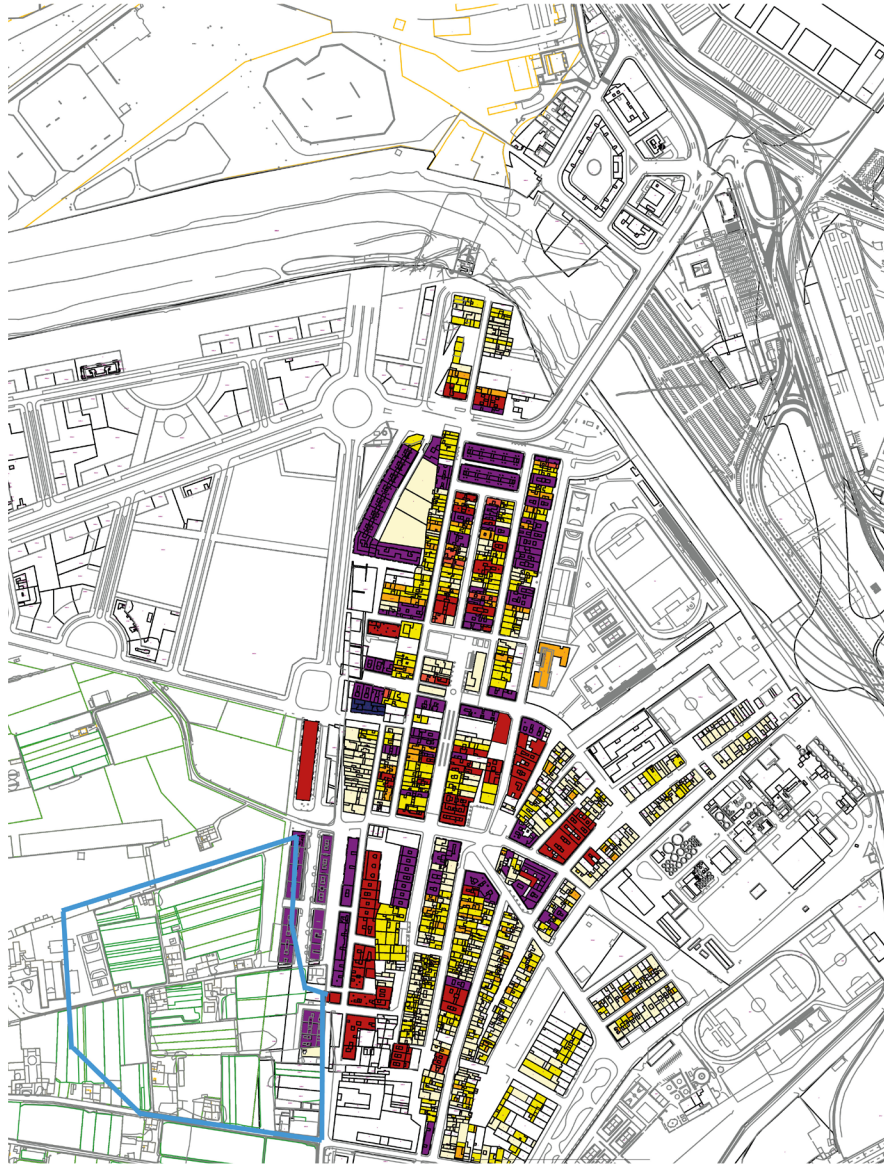
Built after 1996

Low consumption / sqm

Free position on the plot



2.6 HOUSING TYPOLOGIES- BROWN FIELDS



Traditional agricultural buildings

1-3 Storeys

Mostly built between 1900 - 1950

Very high consumption / sqm



extra HOUSING TYPOLOGIES - INFORMAL



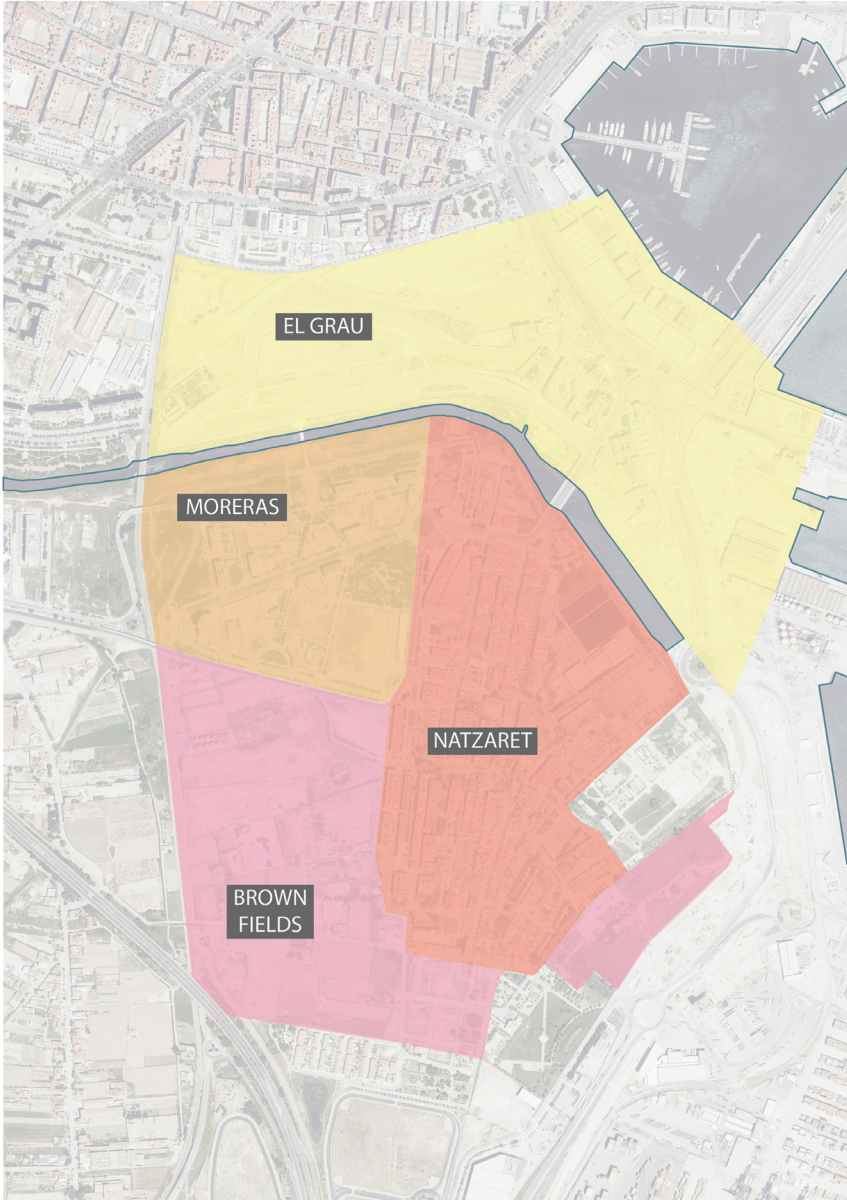
Informal shelters, spontaneous settlement

free location on the plot



2.5 FUNCTIONS

NATZARET



education



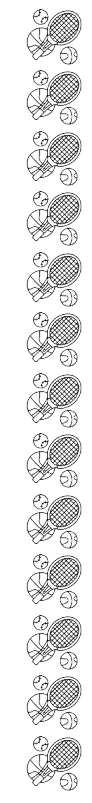
repair shops



groceries



sport & culture

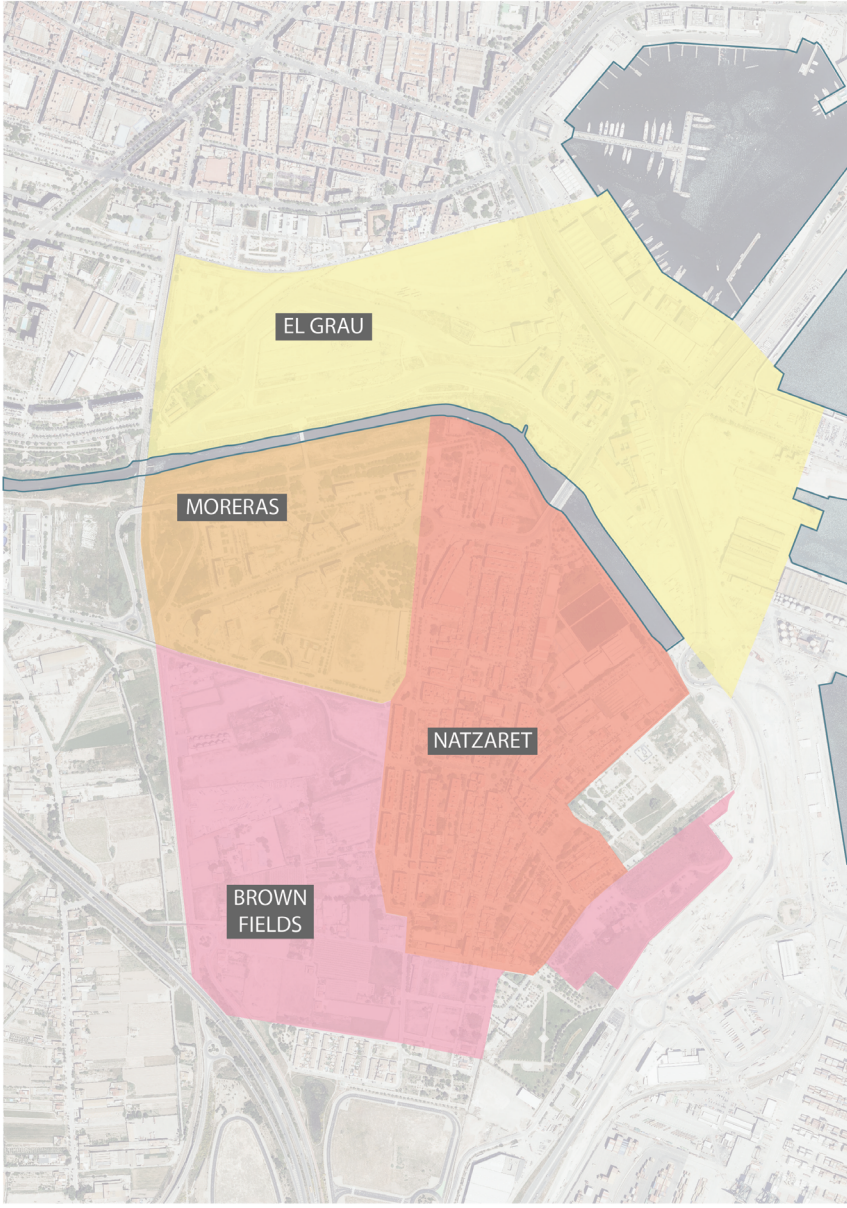


gastronomy



2.6 FUNCTIONS

EL GRAU



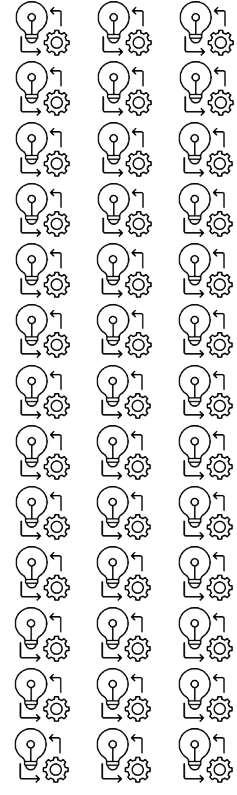
old harbour
sights



institution &
administration

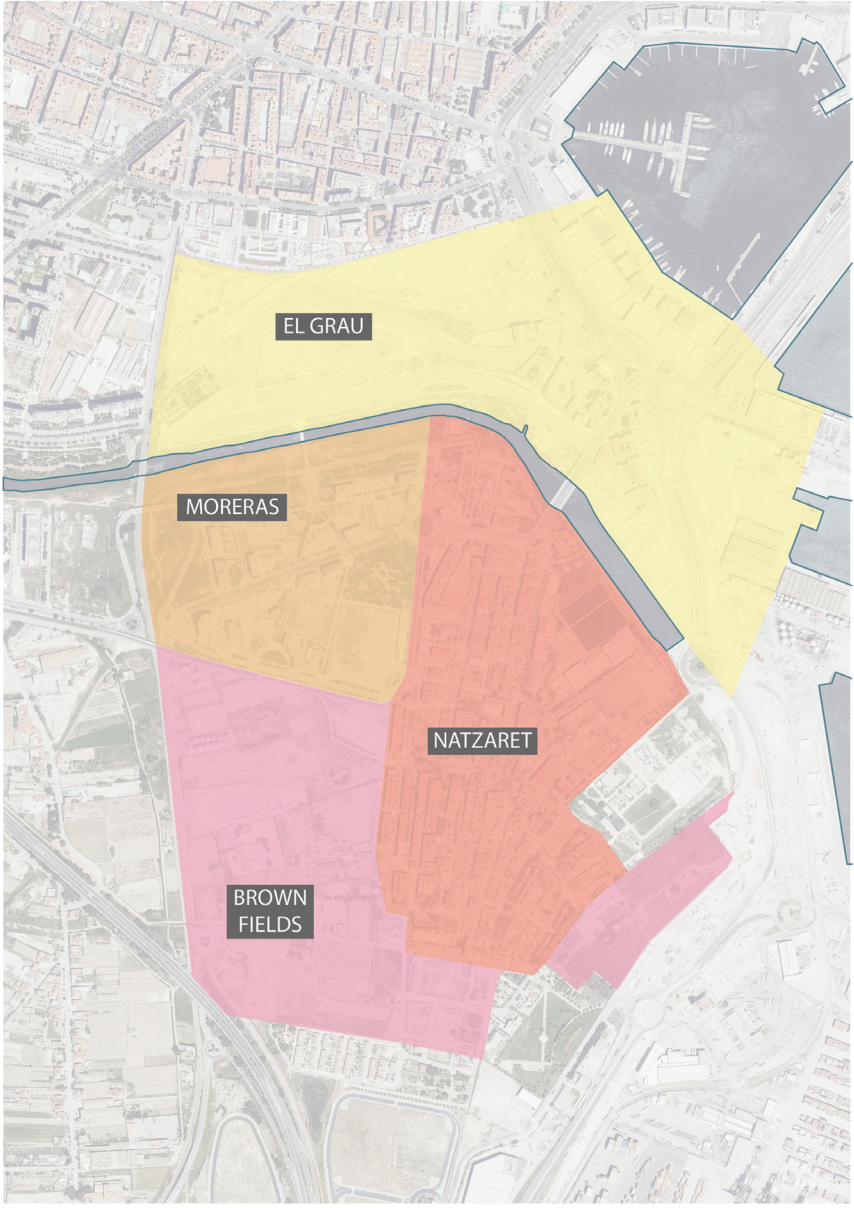


business &
industry

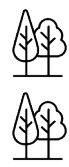


2.7 FUNCTIONS

MORERAS



parks & gardens



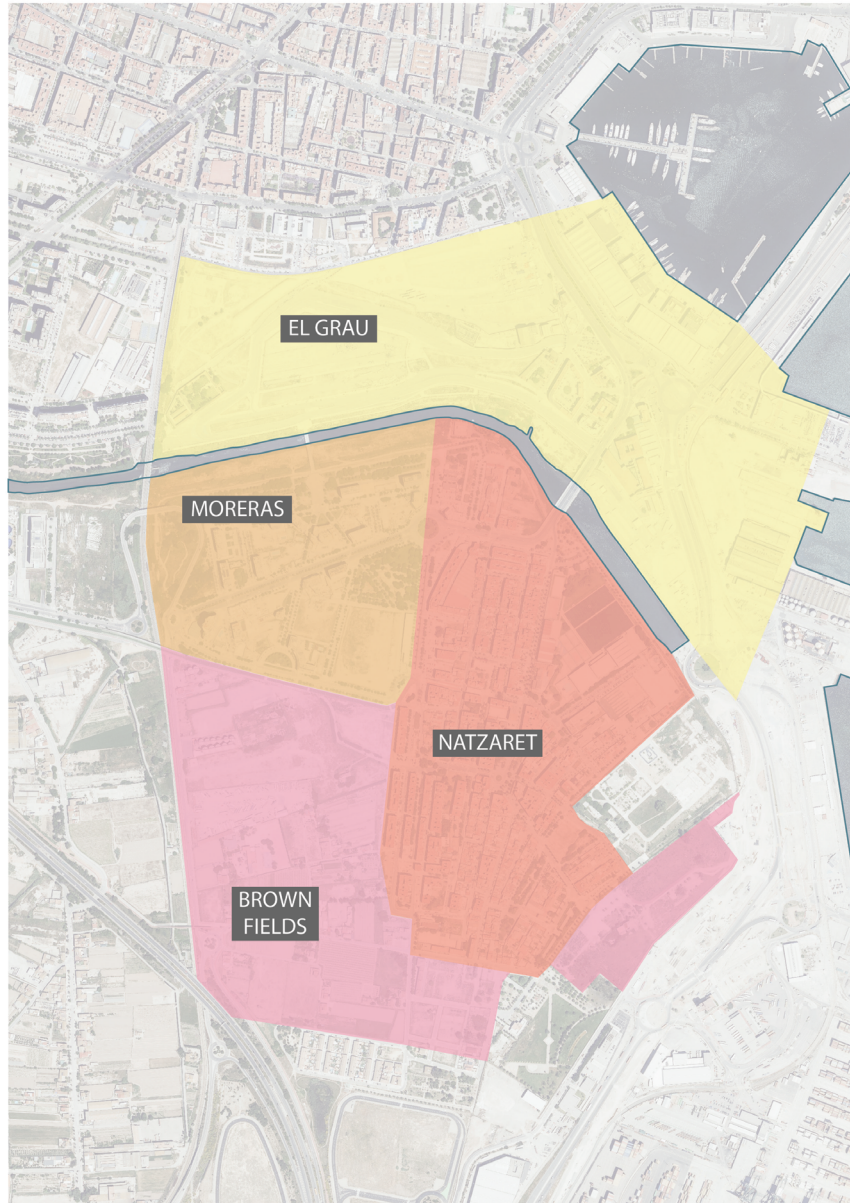
gastronomy



hospital



2.0 FUNCTIONS



BROWN FIELDS

parks & gardens



agriculture



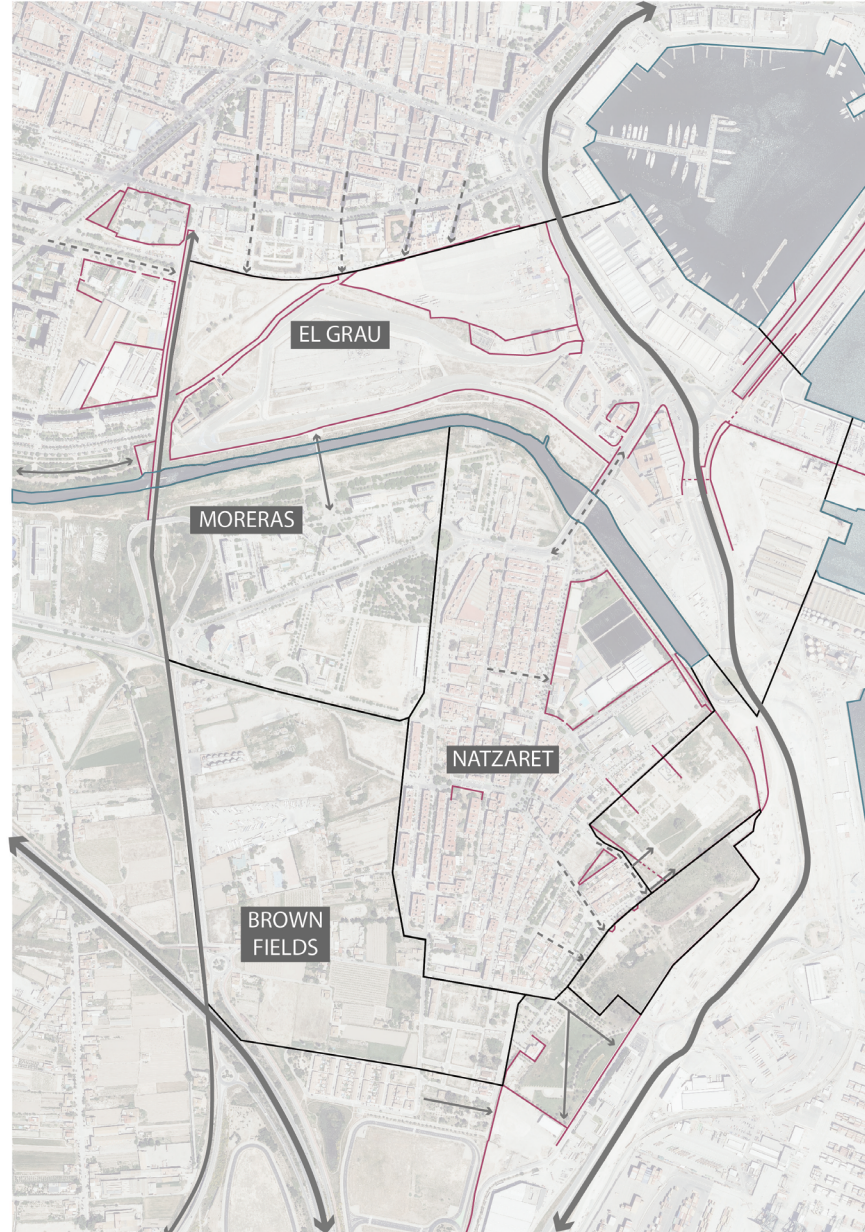
3 KEY PROBLEMS- DEFINITION

MORERAS

- Monofunctional apartment buildings (?)
- Lack of public spaces
- Disintegration of Turia River and Park
- Traffic noise and pollution

BROWN FIELDS

- Risk of degradation of agriculture fields and orchards
- Large-scale infrastructure facilities
- Vacant spaces
- Decrease of water quality
- Contamination of underground waters



EL GRAU

- Vacant spaces
- Mega events
- Disconnection from the city
- Disintegration of Turia River and Park
- Risk of tourism gentrification

NATZARET

- Disconnection from the city
- Disintegration of the sea
- Lack of public and green spaces
- Lack of social housing
- Old housing stock
- Rent increases
- High unemployment and poverty
- Port expansion conflict
- Borders, "The Wall"
- Light and particle pollution from the port
- Oil industry impacts

4 DEFINITION OF TOOLS

Policies & laws	Elaborating new financing models	Community based & cooperative housing	Affordable housing especially for vulnerable groups	Providing livable housing for diverse groups	Subsidies for low-income households	Priority 1 for category 'plots in urban neighbourhood'	Creating a socially acceptable mix of functions	Encourage local entrepreneurship and minority-owned businesses
Spatial tools	Flexible floor plans, shared apartments, apartment swaps	Priority to smaller apartments and common use areas	Protection of existing housing structures	Establish connections inside the area and to the city	Integrate housing into an open-space natural environment	Aim for a socially acceptable density	Create new public Spaces: as gathering & meeting points	Providing accessibility through climate adaption of housing & public spaces
	Expand the range of women's shelters and refuges	Protect existing public spaces	Facilitate the management of unpaid care work.	Improve walking and biking infrastructure	Ensure widespread provision of free, functioning, clean, public restrooms			
Community based tools	Strengthen community led design	Establishing a Women's Forum* for housing	Enhance community-oriented & shared infrastructures					
Tools for process design / procedural tools	Pay attention to Environmental justice	Small scale development: „cell by cell“	Ensure women's* equal representation	Temporary uses for vacant spaces				

5 TOOLS FOR EACH SUB-AREA



Protection of existing housing structures

Building type and programming should be coherent with existing neighbourhood structures

Protection of existing public spaces

No building permissions on existing public spaces

51 TOOLS FOR EACH SUB-AREA



Community based & cooperative housing

Support administrative structures for community based & cooperative housing

Priority to smaller appartments and common use areas

E.g. shared laundry, common areas and kitchen facilities

Integrate housing into an open-space natural environment

5.2 TOOLS FOR EACH SUB-AREA



New Types of housing for alternative ways of living

Use flexible floor plans, shared appartents, apartment swaps

Affordable housing especially for vulnerable groups

Using existing & establishing new policies for building & protecting affordable housing

Providing livable housing for diverse groups

People with different income, nationalities, age groups and family types

Aim for a socially acceptable density

Density that is controlled by the city and not by investors

Subsidies for low-income households

Expand the range of women's shelters and refuges

Shelters and refuges for women* threatened by violence and/or poverty

Establishing a Women's Forum* for housing

Priority 1 for category 'plots in urban neighbourhood'

E.g. require obligatory statement why these plots cannot be used

Creating a socially acceptable mix of functions

E.g. mixed residential and commercial building

Facilitate the management of unpaid care work.

E.g. plan playgrounds, yards, or open space near residences with visual contact to relieve crowded living conditions

Ensure widespread provision of free, functioning, clean, public restrooms

5.3 TOOLS FOR ALL SUB-AREAS



- Elaborating new financing models

E.g. rent price as a percentage of income/ micro-loans

Pay attention to Environmental justice

Help and support especially for less financially strong households often living in old houses & neglected neighbourhoods (e.g. during renovation)
- Small scale development: „cell by cell“

Improve walking and biking infrastructure

Ensure that especially facilities as schools, hospitals & Sports facilities are nearby and can be reached safely
- Enhance community-oriented & shared infrastructures

E.g. educational, sports- and recreational programs, swap exchanges and swap boxes, sharing opportunities (home Appliances, mobility, Skills & Competencies)

Encourage local entrepreneurship and minority-owned businesses
- Strengthen community led design

Fostering participation of residents regarding the development of public spaces & built infrastructure

Temporary uses for vacant spaces
- Establish connections inside the area and to the city

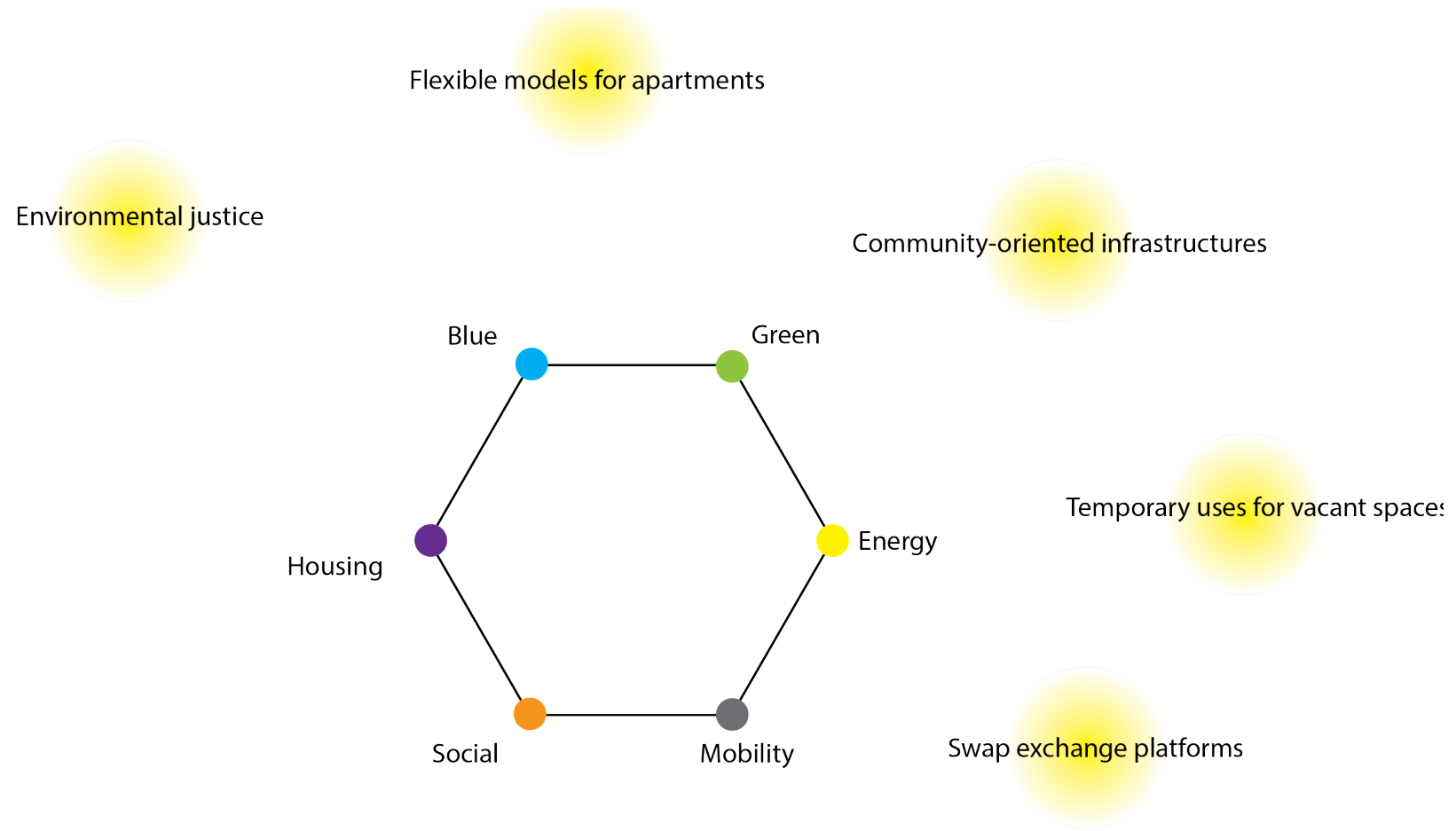
Connect existing satellite apartment buildings, connect Las Moreres and El Grao across the river, Las Moreres to the West and El Grao to the North
- Create new public Spaces: as gathering & meeting points
- Providing accessibility through climate adaption of housing & public spaces

Bringing existing infrastructure to quality, providing shade for children and elderly people
- Ensure women's* equal representation

At participatory events & decision making processes

6 ANALYSIS OF SYNERGIES

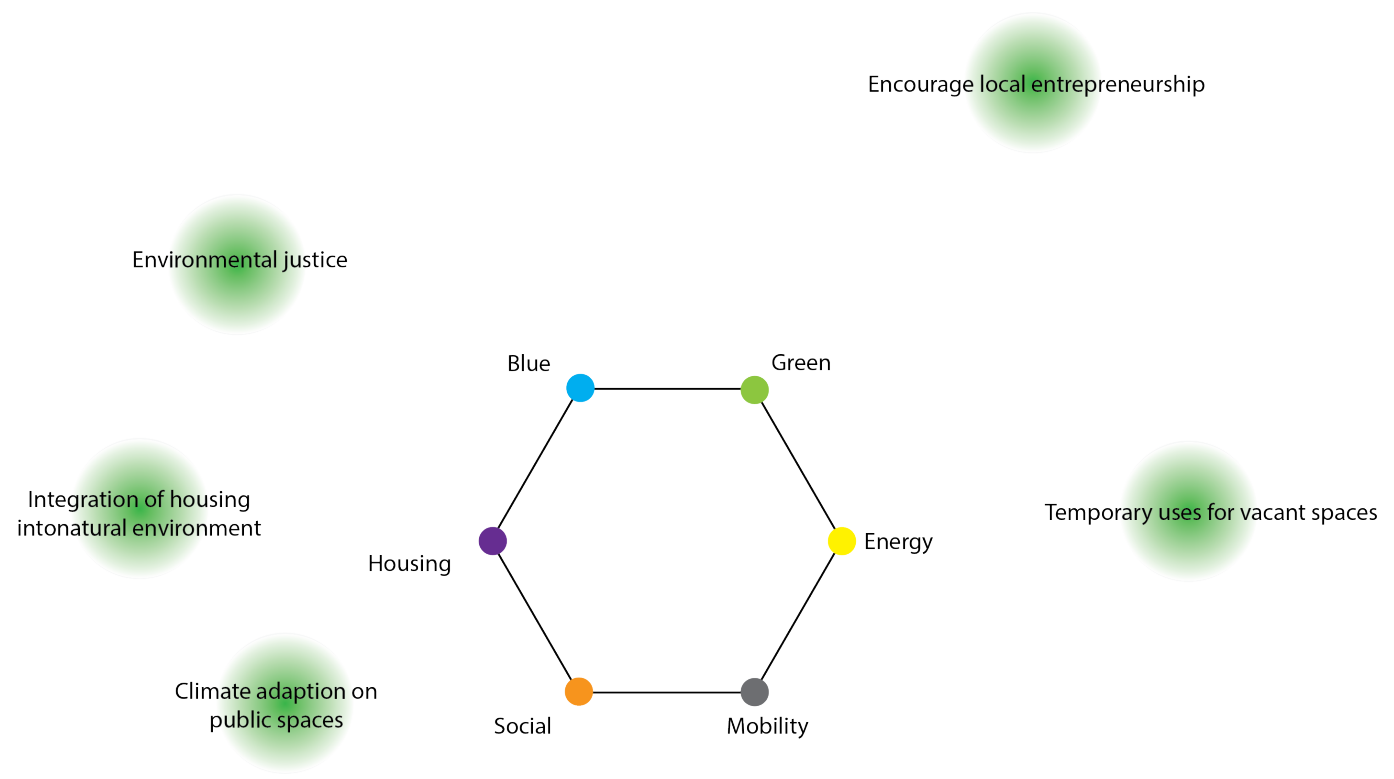
ENERGY



6.1

ANALYSIS OF SYNERGIES

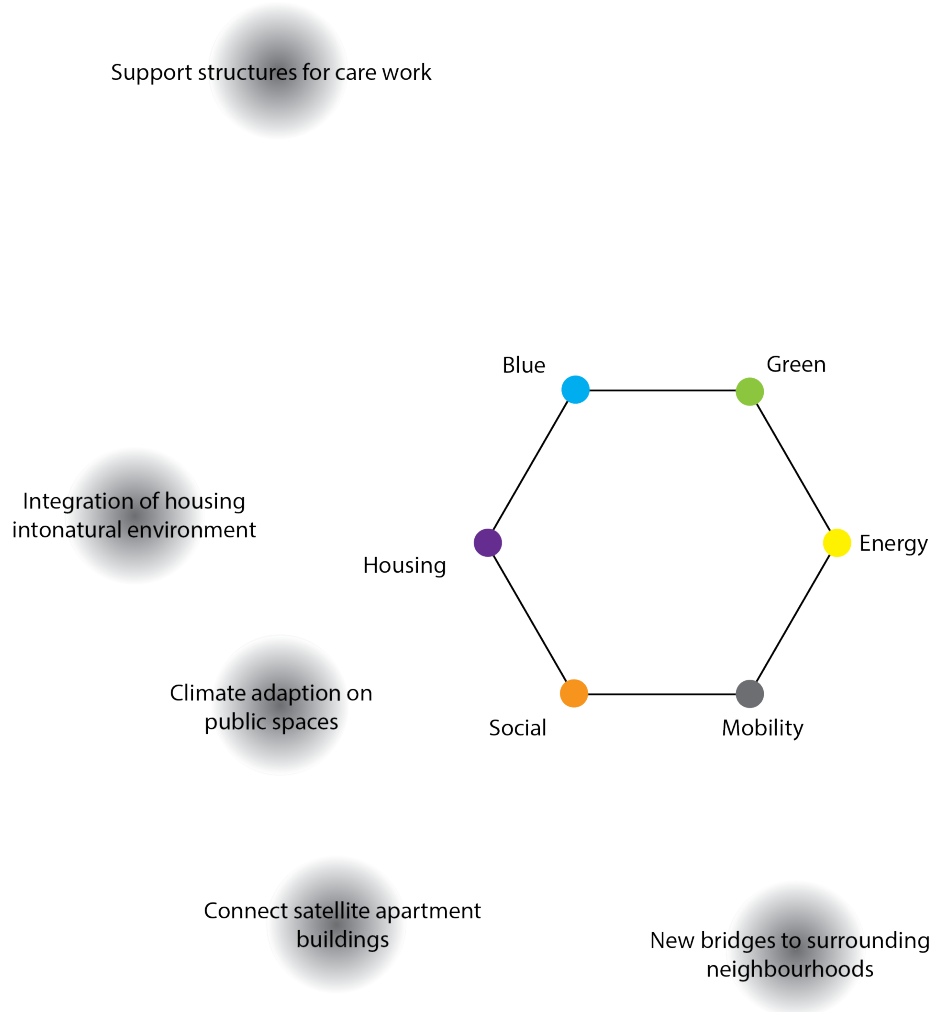
GREEN-BLUE



6.2

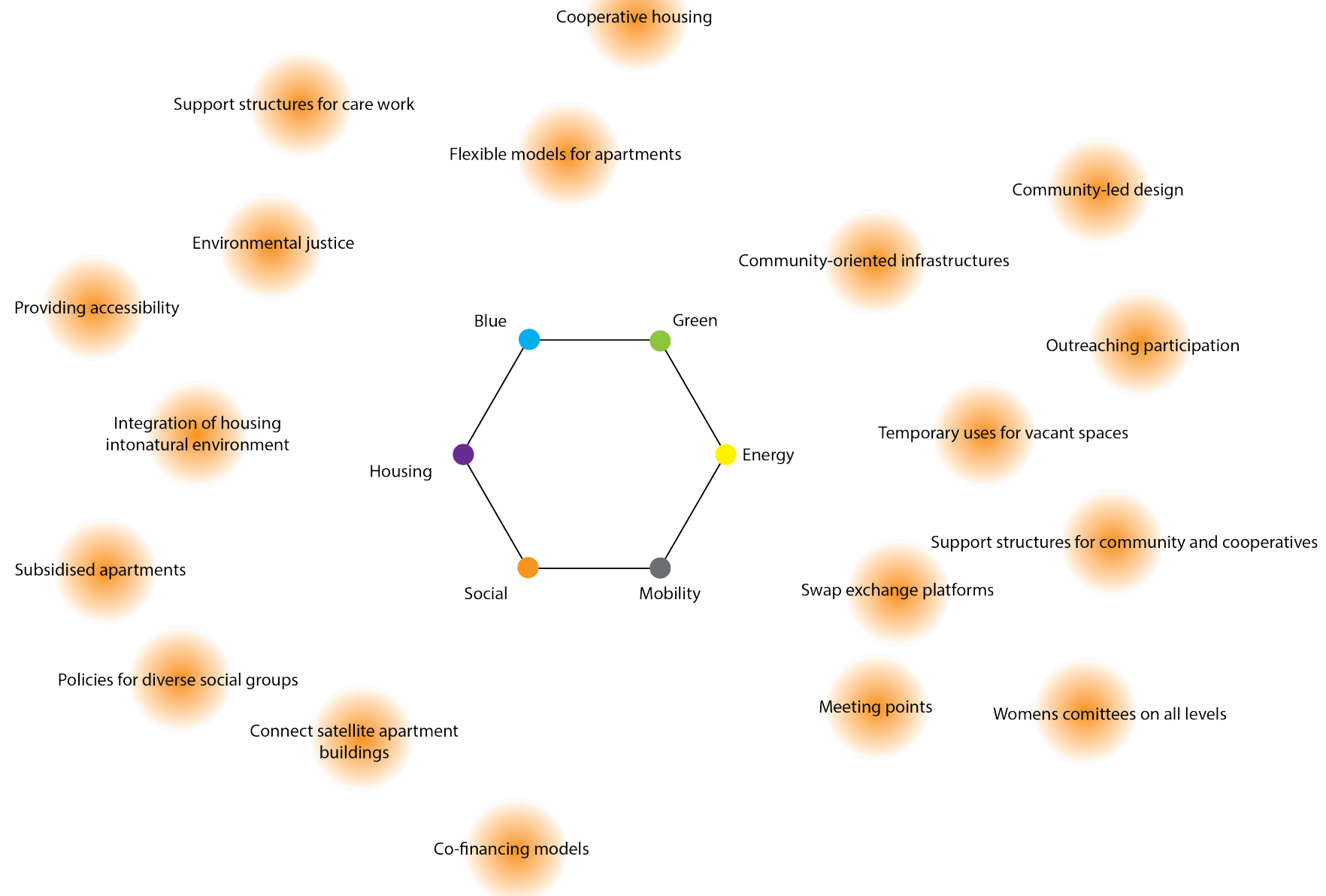
ANALYSIS OF SYNERGIES

MOBILITY



ANALYSIS OF SYNERGIES

SOCIAL



6.4 ANALYSIS OF SYNERGIES

Cooperative housing

